



Improving your PERFORMANCE

403U/VM2, 403U/VM3 and 403U/VM4 auto/manual control compact pumps

Technical information and features

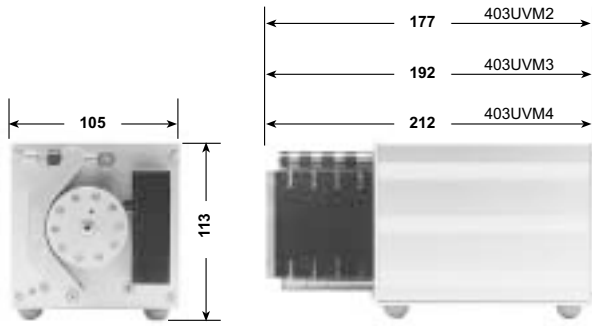
- VM2 pumphead provides two channels, VM3 three channels and VM4 four channels
- Flow rates from 0.001 to 17ml/min per channel
- Ten stainless-steel rollers with low-friction bearings
- Speed control via top panel mounted keypad, with digital display
- Reversible motor for easy fluid recovery
- "Max" high speed priming function
- Individual occlusion adjustment for every channel



Flow rate ranges, per channel (ml/min)

Tube code	Orange/ Black	Orange/ Red	Orange/ Blue	Orange/ Green	Orange/ Yellow	Orange/ White	Black/ Black	Orange/ Orange	White/ White	Red/ Red	Grey/ Grey	Yellow/ Yellow	Yellow/ Blue
Bore mm	0.13	0.19	0.25	0.38	0.50	0.63	0.76	0.88	1.02	1.14	1.29	1.42	1.52
0.5 to 10rpm	0.001-0.01	0.001-0.03	0.002-0.04	0.005-0.1	0.01-0.2	0.01-0.3	0.02-0.4	0.03-0.5	0.03-0.7	0.04-0.9	0.05-1.1	0.06-1.3	0.07-1.4
2.5 to 50rpm	0.003-0.06	0.006-0.13	0.011-0.2	0.025-0.5	0.04-0.9	0.07-1.4	0.10-2.0	0.13-2.6	0.17-3.5	0.21-4.3	0.27-5.4	0.32-6.4	0.36-7.2

Tube code	Blue/ Blue	Green/ Green	Purple/ Purple	Purple/ Black	Purple/ Orange	Purple/ White
Bore mm	1.65	1.85	2.05	2.29	2.54	2.79
0.5 to 10rpm	0.08-1.7	0.10-2.0	0.12-2.3	0.14-2.7	0.16-3.1	0.17-3.4
2.5 to 50rpm	0.41-8.3	0.50-10.0	0.59-12	0.69-14	0.78-16	0.85-17



403U/VM2, 403U/VM3 and 403U/VM4 auto/manual control compact pumps

Product code	rpm	Description
040.371V.M20*	0.5-10	403U/VM2 220-240V 50/60Hz 1ph dual channel manifold tube pump
040.3K1V.M20*	2.5-50	403U/VM2 220-240V 50/60Hz 1ph dual channel manifold tube pump
040.371V.M30*	0.5-10	403U/VM3 220-240V 50/60Hz 1ph three channel manifold tube pump
040.3K1V.M30*	2.5-50	403U/VM3 220-240V 50/60Hz 1ph three channel manifold tube pump
040.371V.M40*	0.5-10	403U/VM4 220-240V 50/60Hz 1ph four channel manifold tube pump
040.3K1V.M40*	2.5-50	403U/VM4 220-240V 50/60Hz 1ph four channel manifold tube pump
049.0011.000 049.0031.000 049.0051.000 049.0071.000	400AC1 400AC2 400AC3 400AC4	0-10V CW/STOP/CCW 1.5m remote cable 4-20mA CW/STOP/CCW 1.5m remote cable CW/STOP/CCW 1.5m remote cable START/STOP 3m remote cable fitted with foot switch

*Replace last 0 with A, E or U for American, European or UK mains supply (American 110V 1ph 60Hz)

Tube ordering codes						
Manifold pump tubing for 401U/DM2, 401U/DM3 and 403U/VM4						
Colour code	Tube	Marprene*	PVC	Silicone	Solvent resistant	Acid resistant
Orange/black	0.13		980.0013.000		984.0013.000	
Orange/red	0.19		980.0019.000		984.0019.000	
Orange/blue	0.25	978.0025.000	980.0025.000		984.0025.000	
Orange/green	0.38	978.0038.000	980.0038.000		984.0038.000	
Orange/yellow	0.50	978.0050.000	980.0050.000		984.0050.000	986.0050.000
Orange/white	0.63	978.0063.000	980.0063.000	982.0063.000	984.0063.000	986.0063.000
Black/black	0.76	978.0076.000	980.0076.000	982.0076.000	984.0076.000	986.0076.000
Orange/orange	0.88	978.0088.000	980.0088.000	982.0088.000	984.0088.000	986.0088.000
White/white	1.02	978.0102.000	980.0102.000	982.0102.000	984.0102.000	986.0102.000
Red/red	1.14	978.0114.000	980.0114.000	982.0114.000	984.0114.000	986.0114.000
Grey/grey	1.29	978.0129.000	980.0129.000	982.0129.000	984.0129.000	986.0129.000
Yellow/yellow	1.42	978.0142.000	980.0142.000	982.0142.000	984.0142.000	986.0142.000
Yellow/blue	1.52	978.0152.000	980.0152.000	982.0152.000	984.0152.000	986.0152.000
Blue/blue	1.65	978.0165.000	980.0165.000	982.0165.000	984.0165.000	986.0165.000
Green/green	1.85	978.0185.000	980.0185.000	982.0185.000	984.0185.000	986.0185.000
Purple/purple	2.05	978.0205.000	980.0205.000	982.0205.000	984.0205.000	986.0205.000
Purple/black	2.29	978.0229.000	980.0229.000	982.0229.000	984.0229.000	986.0229.000
Purple/orange	2.54	978.0254.000	980.0254.000	982.0254.000	984.0254.000	986.0254.000
Purple/white	2.79	978.0279.000	980.0279.000	982.0279.000	984.0279.000	986.0279.000

* For autoclavable Marprene tubing, please replace last "0" with "+" - for example 978.0229.00+
Please state the product code when ordering pumps and tubing

Specification

Weight	2.5kg
Operational temperature range	5°C to 40°C
Noise	<70dBA at 1m
Control ratio	20:1
Standards	CE, BS0800, IEC335-1, EN60529 (IP21)
Supply	13VA, 220-240V 50/60Hz 1ph

Materials of construction

Drive	Extruded anodised aluminium
Front support plate	Anodised aluminium
Pumphead track	Extruded anodised aluminium
Pumphead rollers	Stainless steel
Pumphead rotor	Aluminium
Pumphead guard	Polyester resin (PET)
Tube clamps	Acetal



Watson-Marlow-Bredel Pumps
Falmouth
Cornwall
England
TR11 4RU
Tel: +44 (0) 1326 370370
Fax: +44 (0) 1326 376009
www.watson-marlow.com
Email support4gb@watson-marlow.co.uk